

CHICAGO



Frames - Constructed from solid birch wood. Selected MDF boards used for footstool construction. All joints glued and stapled for extra strength.

Seat Cushions - All seat cushions are constructed from foam with a 300g high-loft fibre wrap for maximum comfort and support. Seat cushions are reversible.

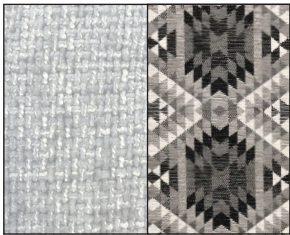
Back Cushions - All back cushions are filled with conjugate hollow virgin white fibre. Standard Back Cushions are reversible.

Feet - Dark Feet Only.

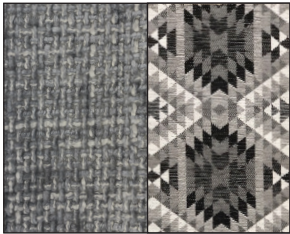
Care Instructions - Dry Clean Only.

Options - High Back Only.

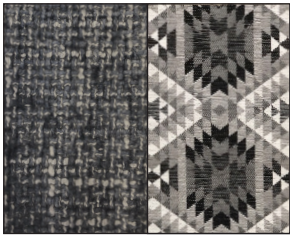
Swatch Option:



Hopsack Silver Collection



Hopsack Pewter Collection



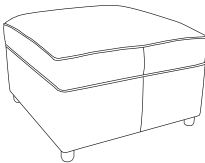
Hopsack Slate Collection



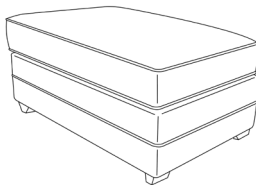
Hopsack Stone Collection



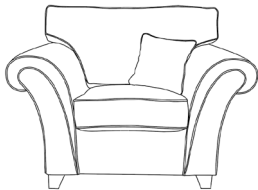
Designer Footstool
H:40 x W:95 x D:65 (cm)
Pattern or Plain



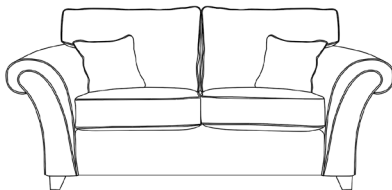
Standard Footstool
H:43 x W:63 x D:66 (cm)
Plain



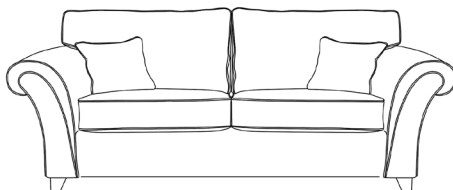
Chaise Footstool
H:47 x W:66 x D:100 (cm)
Plain



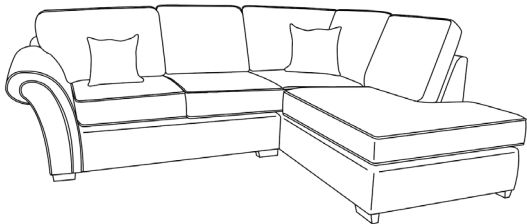
Armchair
H:95 x W:124 x D:97 (cm)
x1 Small Scatter



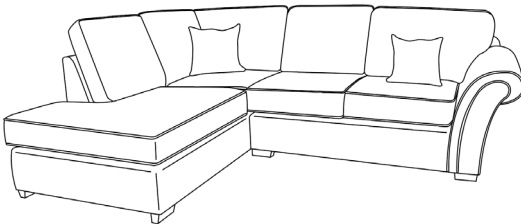
2 Seater
H:95 x W:180 x D:97 (cm)
x2 Small Scatters



3 Seater
H:95 x W:210 x D:97 (cm)
x2 Small Scatters



Right Hand Chaise
H:95 x W:252 x D:200 (cm)
x2 Small Scatters



Left hand Chaise
H:95 x W:200 x D:252 (cm)
x2 Small Scatters