

# BUCKINGHAM





# BUCKINGHAM

**Frames** - Constructed from solid birch wood. Selected MDF boards used for footstool construction. All joints glued and stapled for extra strength.

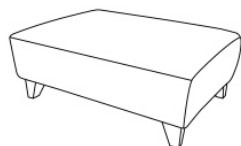
**Seat Cushions** - All seat cushions are constructed from foam with a 300g high-loft fibre wrap for maximum comfort and support. Seat cushions are reversible.

**Back Cushions** - All back cushions are filled with conjugate hollow virgin white fibre. Standard Back Cushions are reversible.

**Feet** - Dark Wood Castor Feet Only.

**Care Instructions** - Dry Clean Only.

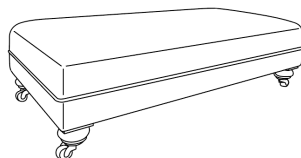
**Options** - High Back or Scatter Back.



**Designer Footstool**

H:40 x W:95 x D:65 (cm)

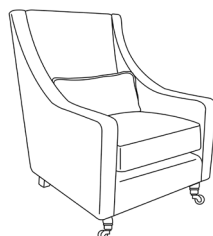
Pattern or Plain



**Bench Stool**

H:36 x W:134 x D:69 (cm)

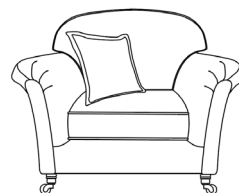
Top Half: Pattern / Bottom Half: Plain



**Accent Chair**

H:102 x W:76 x D:90 (cm)

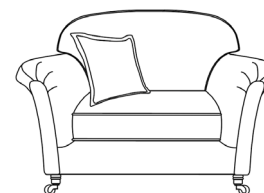
Full Pattern or Full Plain



**Armchair**

H:95 x W:105 x D:96 (cm)

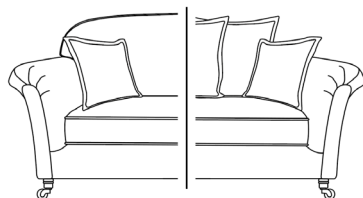
x1 Small Scatter



**Lovechair**

H:95 x W:135 x D:96 (cm)

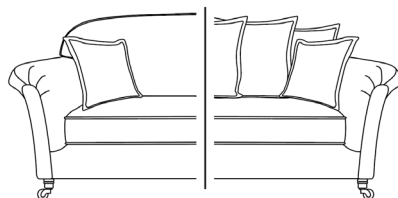
x1 Small Scatter



**2 Seater**

H:95 x W:180 x D:96 (cm)

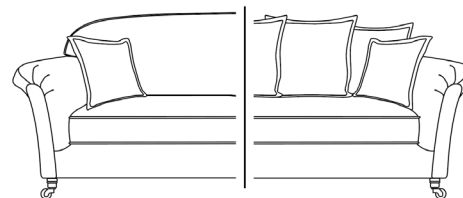
Scatter Combination: x2 Plain / x1 Pattern  
x2 Small Scatters



**3 Seater**

H:95 x W:201 x D:96 (cm)

Scatter Combination: x3 Plain / x2 Pattern  
x2 Small Scatters



**4 Seater Split**

H:95 x W:250 x D:96 (cm)

Scatter Combination: x3 Plain / x2 Pattern  
x2 Small Scatters



**2 Corner 1**

H:95 x W:215 x D:284 (cm)

Scatter Combination: x5 Plain / x4 Pattern  
x2 Small Scatters



**1 Corner 2**

H:95 x W:284 x D:215 (cm)

Scatter Combination: x5 Plain / x4 Pattern  
x2 Small Scatters

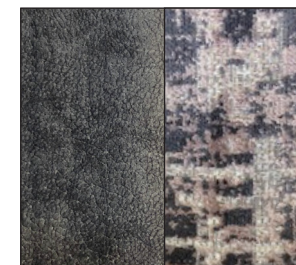


**2 Corner 2**

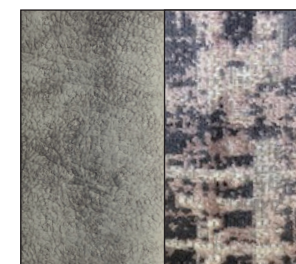
H:95 x W:284 x D:284 (cm)

Scatter Combination: x6 Plain / x5 Pattern  
x2 Small Scatters

**Swatch Option:**



**Rumba Dark Grey Collection**



**Rumba Grey Collection**



**Rumba Silver Collection**



**Rumba Pebble Collection**