



INSTRUCTION MANUAL

CHIPPER SHREDDER

Model No: THPDS65 -- Product No: 1938153001

MINIMUM OF TWO PERSONS ASSEMBLY REQUIRED

SAVE THESE INSTRUCTIONS

SPARES & SUPPORT: 01793 333212

Please read & understand this manual, paying attention to the safety instructions, before use.
The manufacturer reserves the right to change the product specification and livery according to
continued product improvements.

Images used are for illustration purposes only

27/07/2017

CONTENTS

SPECIFICATION

IMPORTANT INFORMATION

GENERAL SAFETY INSTRUCTIONS

GET TO KNOW YOUR MACHINE

COMPONENTS

ASSEMBLY

OPERATION

MAINTENANCE

STORAGE

TROUBLE SHOOTING

PARTS DIAGRAM & LIST

EC DECLARATION OR CONFORMITY

WARRANTY

NOTES

MINIMUM TWO PERSONS ASSEMBLY IS REQUIRED

This product requires assembly by a **MINIMUM OF TWO PERSONS** before use. See the "Assembly" section for instructions. Please check that all parts required for the assembly of this spreader are included. If for any reason you believe a part for the assembly is missing or damaged, please contact us.

If you require any assistance with regards to the contents or operation of your machine, please contact us:

TEL: 01793 333212

**EMAIL: customerservice@handydistribution.co.uk
(MON – FRI 8.00AM TO 5.30PM EXCL. BANK HOLIDAYS)**

SPECIFICATION

The manufacturer reserves the right to change the product specification and livery according to continued product improvements.

Model	THPDS65
Product Number	1938153001
Engine	Briggs & Stratton XR950
Cubic Capacity (cc)	208
Engine RPM Max.	3600
Engine Oil	4 Stroke (Not Supplied – refer to engine manual for spec)
Fuel	Unleaded Petrol (Not Supplied – refer to engine manual for spec)
Maximum Cutting Capacity	6cm
Transmission	Parallel Twin V Belts
Cutting System	2 rotating – 1 static blades
Tyre Maximum PSI	20psi (Do not exceed)
Dimensions	L 123.2 x H 106 x W 51.5cm
Product Weight	N.W. 52.5kg – G.W. 75kg

IMPORTANT INFORMATION

INTENDED USE

The shredder is designed solely for shredding/chipping all kind of newly cut tree branches of diameter up to 6cm.

This product is not intended for commercial use. Generally acknowledged accident prevention regulations and enclosed safety instructions must be observed.

Only perform work described in these instructions for use, any other use is incorrect. The manufacturer will not assume responsibility for damage resulting from such use.

GENERAL SAFETY INSTRUCTIONS

Read and understand the owner's manual and labels affixed to the product. Learn its application and limitations as well as the specific potential hazards. Retain these instructions for future reference. The operator is responsible for following the warnings & instructions in this manual and on the product. - **ALL USERS MUST BE OVER 18 YEARS OF AGE.**

STAY ALERT

Do not operate the machine while under the influence of drugs, alcohol, or any medication that could affect your ability to use it properly. Do not use this machine when you are tired or distracted from the job at hand. Be aware of what you are doing at all times. Use common sense.

AVOID DANGEROUS CONDITIONS

Ensure all users have read this manual and are trained in the machines operation.

Make sure there is adequate surrounding workspace. Cluttered areas invite injuries.

Keep your work area clean with sufficient light. Keep the area around the machine clear of obstructions, grease, oil, rubbish & other debris which could cause persons to fall onto moving parts.

INSPECT YOUR MACHINE

Check all bolts, nuts & screws for tightness before each use, especially those securing guards & drive mechanisms. Vibration during use, may cause these to loosen.

Replace damaged, missing or failed parts before using.

Warning labels carry important information. Replace any missing or damaged warning labels.

CRUSH AND CUT HAZARDS

Always keep your hands and feet clear from moving parts while operating the equipment.

Always keep the work area clean and clear when operating.

FIRE HAZARDS

To reduce fire hazards, keep the engine and silencer free of debris, leaves, or excessive lubricant.

Always keep the machine away from naked flame or sparks.

DRESS PROPERLY

You must wear safety glasses/goggles (Normal eyewear glasses do not offer sufficient protection), non-slip heavy duty work gloves to improve your grip. Do not wear loose clothing or jewellery (rings, wrist watches), which can be caught in moving parts. If working with branches that are overhead, wear appropriate safety headwear. Face masks are also recommended in dusty conditions, plus non-skid, safety footwear if necessary.

EAR PROTECTION

Always wear ear protection. Loud noises for an extended period, may damage your hearing.

CONDITIONS

We recommend the machine is not used in rain or wet conditions. Avoid high winds, which may affect the chippings exit from the machine.

DO NOT OVERREACH

Keep proper footing and balance. Never stand on the machine. Serious injury could occur if the machine is tipped or if the moving parts are unintentionally contacted. Do not store anything above or near the machine, where anyone might stand on the machine to reach them.

AVOID INJURY FROM UNEXPECTED ACCIDENT

Keep hands & feet out of the way of all moving parts. Do not place any part of your body or any tool e.g. in moving parts of the machine during operation.

DO NOT FORCE TOOL

Always work within the rated capacity. Do not operate for a purpose for which it was not intended.

NEVER LEAVE THE MACHINE

The machine should be manned at all times, when in use.

STORE IDLE EQUIPMENT

When not in use, the machine should be stored in a dry location. Keep the machine away from children and others not qualified to use it.

TYRES - NOT FOR HIGHWAYS USE

Before operating make sure the tyres have the **RECOMMENDED TYRE PRESSURE OF 20 PSI (Do not exceed 20PSI)**. We recommend the use of FOOT or HAND inflation devices only. Do not use electric or mechanical inflation devices. This is a garden/domestic product, therefore extended use over abrasive surfaces (e.g. concrete, tarmac etc.) could cause premature wear on the tyres.

MAINTAIN YOUR MACHINE WITH CARE

Always stop the engine before cleaning/clearing a blockage or checking, maintenance or working on the machine. Clean the machine immediately after use. Keep the machine clean to ensure it operates to its full & safest performance. When maintaining this machine, only the manufacturer's original replacement parts should be used. The use of non-original manufacturer parts may invalidate your warranty.

TRACTOR PULL SPEED

Do not exceed 10mph, to avoid personal injury and/or equipment damage.



DANGER

The **DANGER ZONE** on the output of the machine must be respected, to avoid serious injury by chips thrown out of the output tube. Do not allow anyone to enter the operating **DANGER ZONE** with you. The danger zone is an area 12 metres in radius.

Insist that persons in the **RISK ZONE** beyond the danger zone wear eye protection from thrown objects. Do not operate if the user or bystanders have insufficient protection.

DANGER ZONE WITHIN 12 METRES - RISK ZONE GREATER THAN 12 METRES

SAFETY SYMBOLS



Safety alert symbol. Used to alert you to potential personal injury hazards. Obey all safety messages that follow this symbol to avoid possible injury.



DANGER

Indicates an imminently hazardous situation which, if not avoided, will result in serious injury.



WARNING

Indicates a potentially hazardous situation which, if not avoided, could result in serious injury.



CAUTION

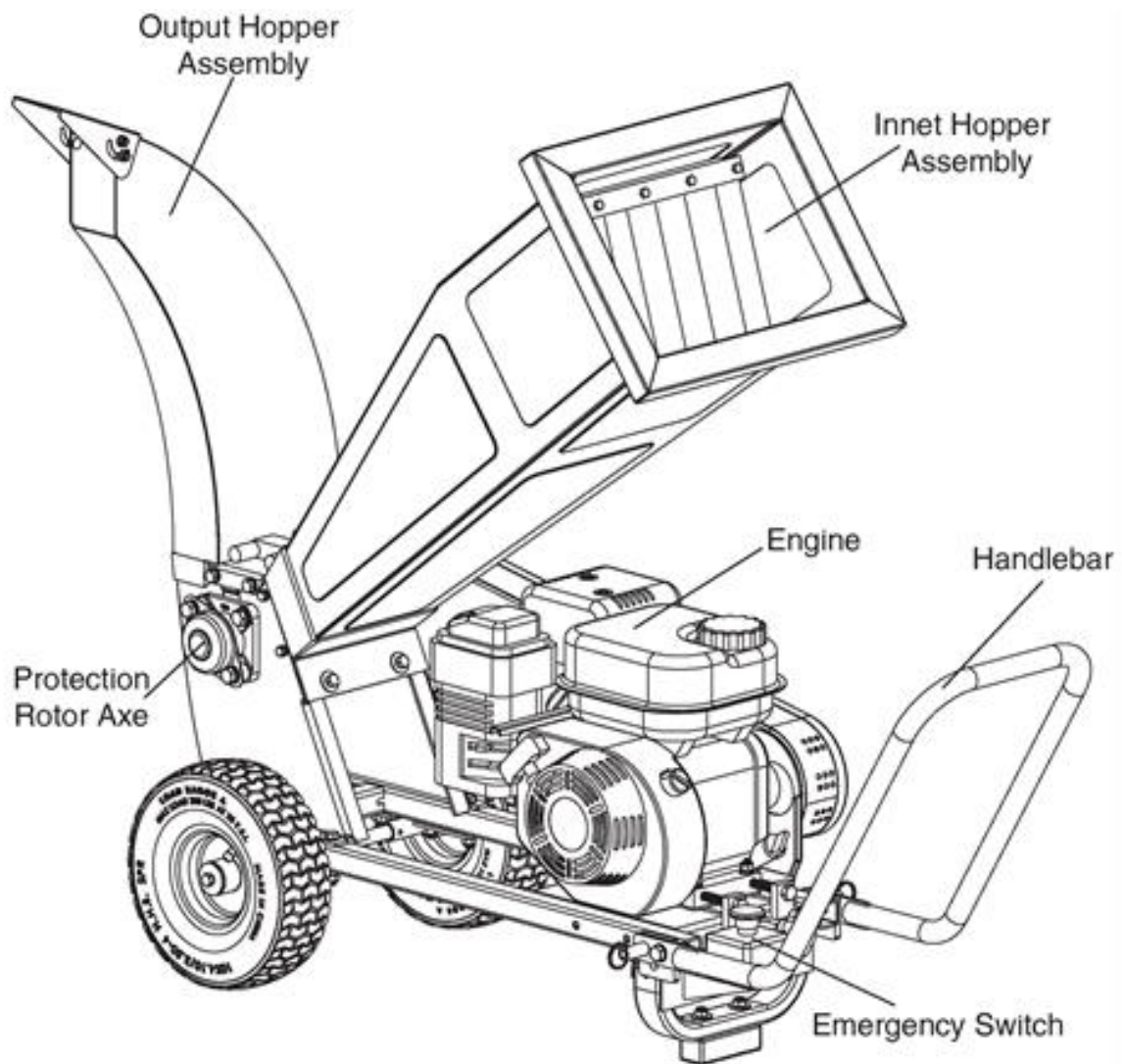
Indicates a potentially hazardous situation which, if not avoided, may result in minor or moderate injury.

CAUTION

Used without the safety alert symbol indicates a potentially hazardous situation which, if not avoided, may result in property damage.



GET TO KNOW YOUR MACHINE



COMPONENTS (THIS IS A MINIMUM OF TWO PERSONS ASSEMBLY.)

When removing from the carton, take extra care due to the weight of the machine.

Please check that all parts required for the assembly of this spreader are included. If for any reason you believe a part for the assembly is missing or damaged, please contact us.

If you require any assistance with regards to the contents or operation of your machine, please contact us:

TEL: 01793 333212

EMAIL: customerservice@handydistribution.co.uk

(MON – FRI 8.00AM TO 5.30PM EXCL. BANK HOLIDAYS)

#33
Hex Bolt M10x60
2pcs



#26
Hex Bolt M8x25
2pcs



#62
Hex Bolt M8x20
4pcs



#61
Hex Bolt M8x16
2pcs



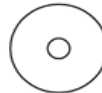
#16
Hex Bolt M6x12
2pcs



#54
Flat Washer Ø10
4pcs



#25
Flat Washer
2pcs



#64
Large Flat Washer Ø8
4pcs



#50
Flat Washer Ø8
2pcs



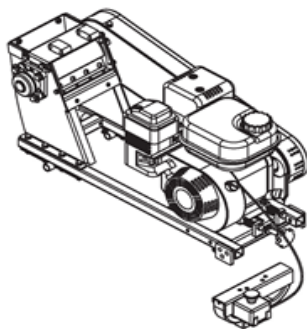
#68
Nylon Lock Nut M10
2pcs



#52
Hex Nut M6
2pcs



#27
Lock Washer Ø8
8pcs



Shredder Hopper
1pc



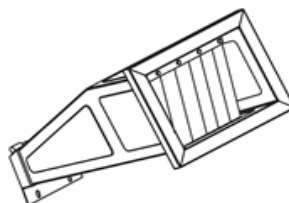
Wheel
2pcs



Handlebar
1pc



Wheel Axle
1pc



Inlet Hopper Assembly
1pc



Output Hopper Assembly
1pc

NOTE: Parts Lists are supplied for information purposes only, not all parts are stocked individually & we recommend you contact our Spares Team on 01793 333212 for expert advice.

ASSEMBLY

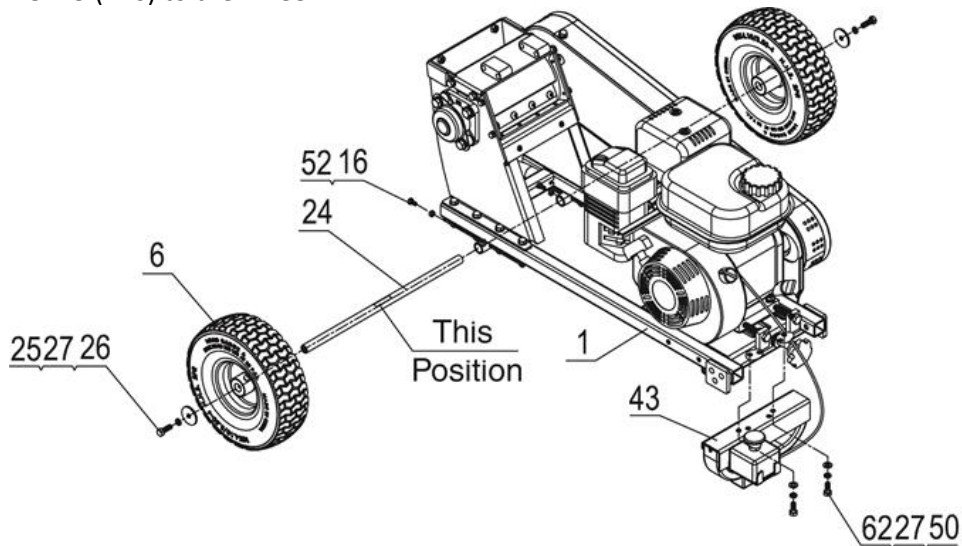
STEP 1: AXLE & WHEELS

Attach wheel axle (#24) and wheel (#6) to the base (#1) using hex bolt M8x25 (#26), lock washer \varnothing 8 (#27) and flat washer (#25).

Tighten the wheel axle (#24) using hex bolt M6x12 (#16) and hex nut M6 (#52).

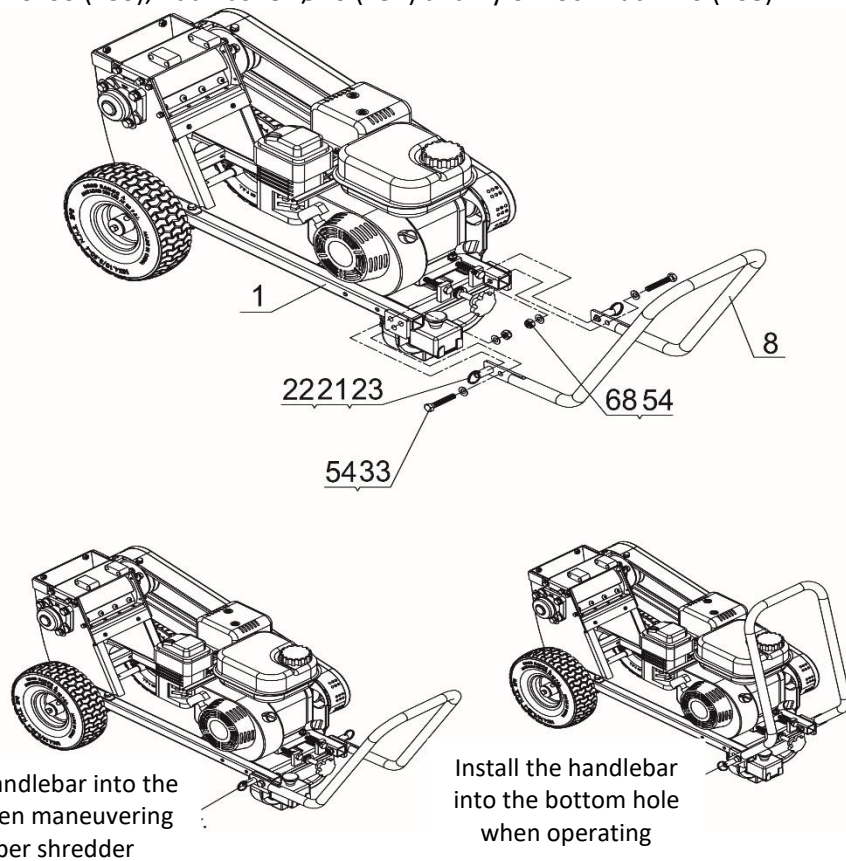
Attach support leg assembly (#43) to the base (#1) using hex bolt M8x20 (#62), lock washer \varnothing 8 (#27) and flat washer \varnothing 8 (#50).

Attention: Lock the Wheel Axle (#24) in position by using a 10" Adjustable spanner when fixing the hex bolt M8X25 (#26) to the wheel.



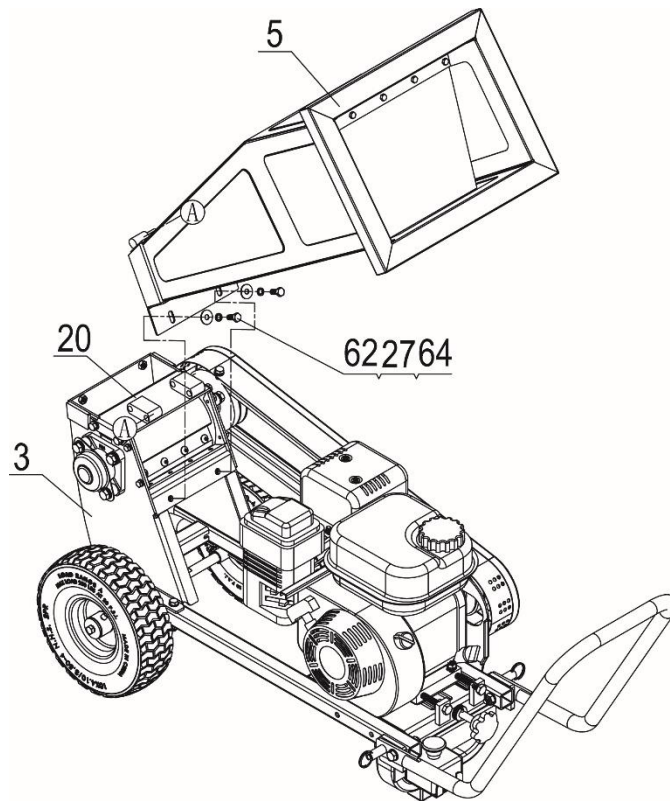
STEP 2: HANDLEBAR

Lock the handlebar (#8) and base (#1) using key ring (#23), pawl (#22) and spring (#21). Then fixed with hex bolt M10x60 (#33), flat washer \varnothing 10 (#54) and nylon lock nut M10 (#68).



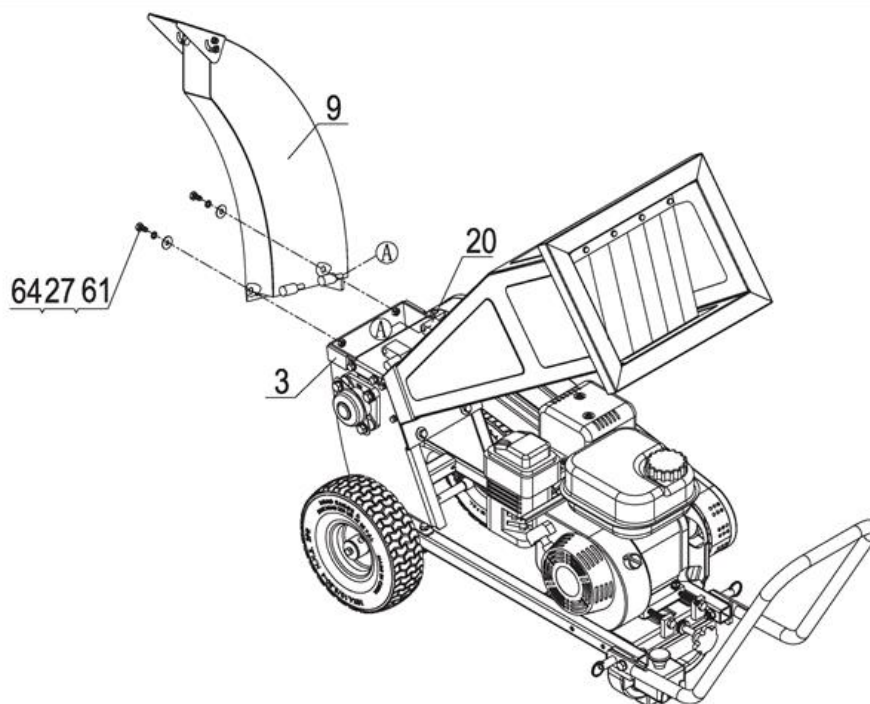
STEP 3: INPUT HOPPER

Attach the inlet hopper assembly (#5) to the roller cover plate assembly (#20), then fit to the main shredder hopper (#3) using hex bolt M8x20 (#62), lock washer Ø8 (#27) and large flat washer Ø8 (#64).



STEP 4: OUTPUT HOPPER

Attach the output hopper assembly (#9) to the roller cover plate assembly (#20), then fixed with shredder hopper (#3) using hex bolt M8x16 (#61), lock washer Ø8 (#27) and large flat washer Ø8 (#64)



FUEL & OIL



Do not attempt to start this machine until you have read the engine manual thoroughly & followed the relevant instructions within the engine manual regarding oiling & fueling the engine.

ADD FUEL

- Petrol is an extremely flammable fuel. Keep clear of naked flames. Do not spill any fuel – do not smoke near fuel or the machine.
- Always shut off the engine before refueling.
- Do not fuel a hot engine – fuel may spill and cause a fire. Open the fuel cap carefully to allow any pressure build-up in the tank to release slowly and avoid fuel spillage. Fuel your machine only in ventilated areas. If you spill fuel, wipe the machine immediately – if fuel gets on your clothing, change immediately.
- To reduce the risk of serious or fatal burn injuries, check for fuel leakage. If fuel leakage is found, do not start or run the engine until leak is fixed.
- Unscrew the machine fuel cap slowly and fill the fuel tank with your fuel mixture to a maximum of 80% capacity. This will allow for fuel tank expansion.
- Fasten the fuel cap tightly, being careful not to cross-thread. This will also prevent loosening through vibration during use.
- Wipe away any spillage, with an appropriate material.
- If the machine has continued leaks, the product should not be started. Never use the machine with damaged ignition cable or spark plug cap, as there is a risk of sparks.
- Use good quality unleaded fuel which contains NO ETHANOL or METHANOL. Use branded unleaded fuel, known to be of good quality (check engine manual for minimum octane levels).
- Fuel which is older than 30 days old can become stale and cause acid & gum deposits in the fuel system or essential carburetor components. This could result in starting issues which **would not be covered by your manufacturer's warranty.**
- To keep fuel fresh, we recommend you use Handy Parts – Sure Start Garden Machinery Fuel Additive which is available in 250ml bottles, for 25 litres of fuel.
 - ✓ Helps makes machines easier to start
 - ✓ Extends shelf life of petrol up to 2 years
 - ✓ Keeps carburetor & engine clean
 - ✓ Reduces emissions & increases fuel economy

IMPORTANT

- ✓ Ensure that any stored petrol is clearly marked in a separate appropriate canister for a maximum of 30 days. **FUEL OVER 30 DAYS OLD WILL CAUSE THE CARBURETTOR TO BLOCK & THE MACHINE DIFFICULT TO START. THIS IS NOT A WARRANTY ISSUE AND WOULD BE CHARGEABLE.**
- ✓ If the machine is not going to be used for a long period, drain the mixture from the fuel tank, start the engine & drain the carburetor of remaining fuel.

ADD & CHECK OIL

Follow instructions and specifications from engine manual supplied with your machine.



Operating the engine with insufficient oil can have catastrophic consequences. Any failure caused by insufficient oil, will not be covered by the manufacturer's warranty, supplied with this machine.

OPERATION



The DANGER ZONE on the output of the machine must be respected, to avoid serious injury by chips thrown out of the output tube. Do not allow anyone to enter the operating DANGER ZONE with you. The danger zone is an area 12 metres in radius.

Insist that persons in the RISK ZONE beyond the danger zone wear eye protection from thrown objects. Do not operate if the user or bystanders have insufficient protection.

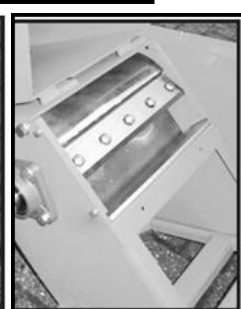
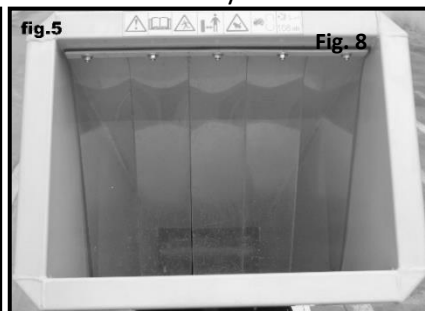
DANGER ZONE WITHIN 12 METRES - RISK ZONE GREATER THAN 12 METRES

The product must only be put into operation if no defects are found. It is crucial that any defective parts are replaced before the product is used again. Check the safety equipment and the safe condition of the product. Check all parts to make sure that they fit tightly. Check whether there are any visible defects: broken parts, cracks, etc.

Do not exceed the equipment maximum chipping/shredding capacity of 6cm.

SAFETY AND TECHNICAL REMARKS

- Only one person at a time should operate the machine.
- Person's operating the machine, must be 18 years old or over.
- Make sure the machine stands firmly on the ground and does not tilt in any way.
- Users must wear safety gloves, ear-protection and safety goggles (not provided) (fig.4).
- Never leave the machine running unattended.
- When working in a confined space, always ensure there is sufficient ventilation & lighting, to reduce the risk of suffocation & injury.
- Jammed pieces in the input tube (fig. 5) can only be removed safely when the engine is off. If necessary, unbolt & tip the input & output chutes to allow access to the blade assembly. Use a wooden pole to remove pieces stuck in the blade assembly. Never use your hands (fig.7 & 8).
- Changing the blades & checking blade bolts, should only be done when the engine is off, the spark plug cap is removed, the rotating blades have stopped & are blocked to stop movement.
- After the first hour of use from assembly, always check that all nuts & bolts still tightened properly. If not, tighten them again.
- Before use, make secure that the bolts on the fixed blade are firmly fixed.



BEFORE OPERATING THE MACHINE

Read the engine manual, ensuring the oiling and fueling of the machine are followed completely.

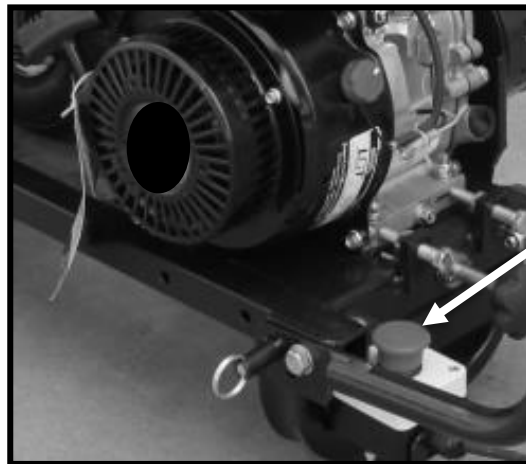
STARTING AND OPERATING THE MACHINE

- Start the engine at half throttle and let it warm up for 3 minutes approx. Then put the engine on full throttle. For correct use of the engine, always refer to the engine manual.
- Put the branches in the input tube and when you feel they are pulled in by the rotating blades, let the branch go. Do not hang on to the branch, the branch will be pulled in by the machine.



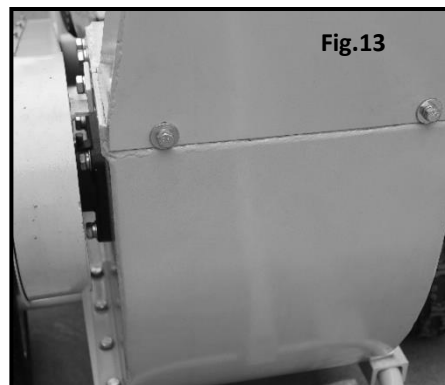
WARNING

In case of emergency or any doubt, immediately activate the safety switch (red knob) to be found by the engine (fig.11).



WARNING

Before starting the engine check that the bolts holding the input and output tubes are fully tightened (fig.12 & 13).



TRANSPORTING THE MACHINE

- Always turn off the engine.
- The engine should be turned off when the machine is moved between areas and when transporting or storing the machine.
- When transporting in a vehicle: properly secure your machine to prevent turnover, fuel spillage and damage.
- The tow bar should be attached securely to the chipper shredder.
- Never exceed 10mph when transporting the chipper shredder.

DURING OPERATION

- Make sure you always have good balance and secure footing.
- Always be aware of your surroundings and stay alert for possible hazards that you may not hear due to the noise of the machine.
- Never allow children to access the machine.
- Avoid operating while people, especially children are nearby.
- To reduce the risk of injury, do not allow any other persons within a radius of 25 meters of your own position. To reduce the risk of damage to property, also maintain this distance from other objects (vehicles, windows).

AFTER FINISHING WORK

- Always clean dust and dirt off the machine – do not use any grease solvents.
- Always keep the machine clean, especially the fuel tank, its surroundings and the air cleaner.
- After the engine has stopped, the exhaust/muffler will still be hot. Never place the machine in any places where there are flammable materials such as dry grass, combustible gases or liquids.

MAINTENANCE

- Before operating make sure the tyres have the **RECOMMENDED TYRE PRESSURE OF 20 PSI (Do not exceed)**. We recommend the use of **FOOT or HAND** inflation devices only. Do not use electric or mechanical inflation devices. This is a garden/domestic product, therefore extended use over abrasive surfaces (e.g. concrete, tarmac etc.) could cause premature wear on the tyres.
- After the first hour's use check that the bolts of the blades and counter blade are firmly fixed and that the gap between blades and counter blade is 0.5mm (half a millimetre). Adjust in the slots if necessary and fix the bolts. Service the machine regularly. Do not attempt any maintenance or repair work not described in the instruction manual. Have all other work performed by an approved service dealer.
- We recommend that servicing & repair work is carried out by an approved service dealer.
- Before proceeding to adjust or repair the machine, be sure to stop the engine and detach the spark plug.
- All technical check-ups and maintenance should be done with the engine shut off and the spark plug cap removed from the spark plug.
- We recommend the machine is cleaned with a brush after each use.
- While cleaning the machine, never spray the bearing with a high-pressure washer. It could cause water to enter the bearings which will cause damage to the machine; (this is not covered by warranty). The two grease nipples on the rotating blade require lubricating once a year or every 500 hours.
- Before putting the shredder into storage grease or oil the bearings, blades and rotating mechanism to protect against corrosion.

IMPORTANT:

If a part needs replacement, only use parts that meet the manufacturer's specifications. Replacement parts that do not meet specifications may result in a safety hazard or poor operation. Engine repairs must be made by an approved service dealer for the engine manufacturer. The engine has a separate warranty to the machine. Refer to the engine manual supplied with the machine for full information and details.

STORAGE

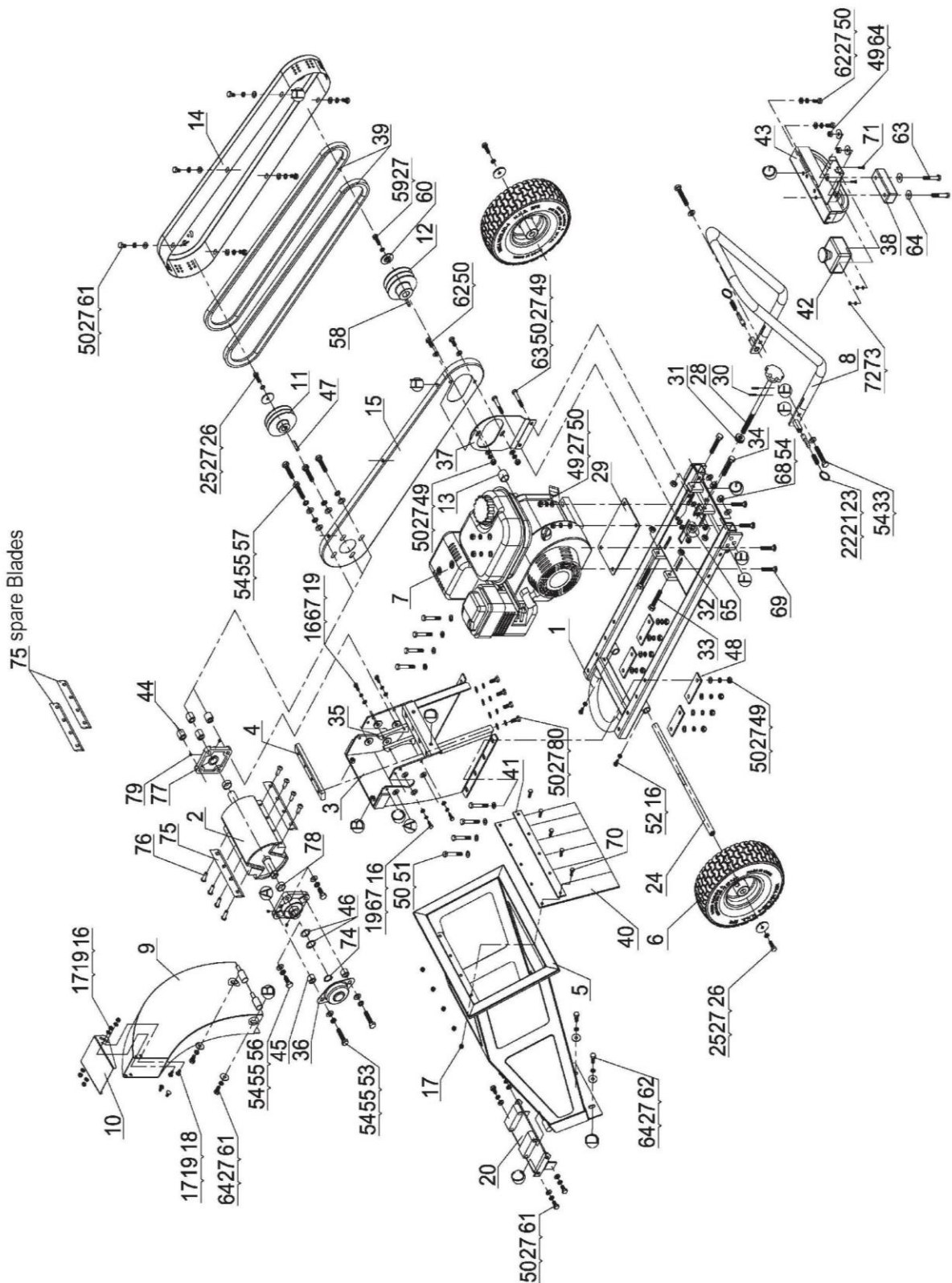
- Never allow material to remain in or on the machine for extended periods of time.
- Before storing make sure the spreader is clean and dry for years of trouble free service.
- Store indoors or protected area during severe weather and winter months.

TROUBLE SHOOTING

PROBLEM	CAUSE	SOLUTION
The shredder does not perform properly: the wood is not pulled in by the machine itself. The chips do not have the same size.	<ul style="list-style-type: none"> - the blades are worn. - the diameter of the branches inserted into the machine is too large. - there is too big a gap between the fixed blade and the counter blade: correct gap is 0.5 mm (half a millimetre) 	<ul style="list-style-type: none"> - change or sharpen the blades & counter-blade. Note: that the blades are sharpened on both edges so they can be reversed. (this should be undertaken by an approved service dealer only) - shut the engine off & remove the branch that is too thick - adjust the gap between the blade & the counter-blade in the slots.
The engine does not start/ the engine shuts off by itself	<ul style="list-style-type: none"> - electrical problem with the engine. - no fuel. - insufficient oil in the engine (refer to the engine manual.) 	<ul style="list-style-type: none"> Check that - the input tube is correctly fitted & the bolts are tight - put the start-switch of the engine "on" - de-activate the emergency switch (turn the knob) - check oil & fuel levels (see engine manual). - contact your approved engine dealer.
The rotation assembly jams. The engine will not start/ turn because the rotation mechanism is jammed.	<ul style="list-style-type: none"> - the diameter of the branch is too big - there are unacceptable materials such as stones or metal in the input tube - a length of branch remains in the rotation mechanism after the engine was last stopped. 	<ul style="list-style-type: none"> - shut off the engine, remove the spark plug cap and turn the rotation mechanism counter-clock-wise. Use a wooden stick to turn and to remove the material from the mechanism and input tube. If necessary, remove the cap of the bearing housing (fig. 6) and rotate the mechanism axle with a spanner (fig 8) If necessary, remove the input or output tube to facilitate access to the rotor (fig. 7 & 8). Check the sharpness of the blades and counter blade and replace them if necessary. Important: screw back the blade bolts.



PARTS DIAGRAM



NOTE: Parts Lists are supplied for information purposes only, not all parts are stocked individually & we recommend you contact our Spares Team on 01793 333212 for expert advice.

PARTS LIST

Item No	Handy Part No	Description	Qty
41	TH237-CPRO7000014	Mound Layer	1
42	TH237-CPRO7013000	Emergency Switch	1
43	TH237-CPRO7011000	Support Leg Assembly	1
44	TH237-CPRO7000015DX	Belt Pulley Cover Bushing	4
45	TH237-CPRO7000016DX	End Cup Bushing	2
46	TH237-N28000043FH	Adjustable Washer C	2
47	TH237-CPRO7000010	Flat Key	1
48	TH237-CPRO7000017	Connecting Plate	4
49	TH237-920608000DX	Nylon Lock Nut M8	18
50	TH237-930108000DX	Flat Washer Ø8	42
51	TH237-910108055DX88	Hex Bolt M8x55	8
52	TH237-920106000DX	Hex Nut M6	2
53	TH237-910110040DX88	Hex Bolt M10x40	2
54	TH237-930210000DX	Flat Washer Ø10	12
55	TH237-930610000DX	Lock Washer Ø10	8
56	TH237-910110025DX88	Hex Bolt M10x25	2
57	TH237-910110045DX88	Hex Bolt M10x45	4
58	TH237-58	Engine Flat Key	1
59	TH237-910108030DX88	Hex Bolt M8x30	1
60	TH237-CPRO7000018DX	Gasket	1
61	TH237-910108016DX88	Hex Bolt M8x16	12
62	TH237-910108020DX88	Hex Bolt M8x20	6
63	TH237-910108050DX88	Hex Bolt M8x50	4
64	TH237-930208000DX	Large Flat Washer Ø8	8
65	TH237-CPRO7000019DX	Hand Wheel Spacer	1
67	TH237-930606000DX	Lock Washer Ø6	4
68	TH237-920610000DX	Nylon Lock Nut M10	2
69	TH237-911408045DX88	Step Bolt M8x45	4
70	TH237-910106020DX88	Hex Bolt M6x20	5
71	TH237-911004016DX	Cross Recess Pan Head Screw M4x16	2
72	TH237-930104000DX	Flat Washer Ø4	2
73	TH237-920604000DX	Nylon Lock Nut M4	2
74	TH237-930420000FH	Circlip for Shaft Ø20	1
75	TH237-CPRO7002001	Blade	4
76	TH237-910408020FH109Q	Hex Socket Button Head Screw M8x20	8
77	TH237-GB778101995	Square Inert Ball Bearing	2
78	TH237-CPRO7000006DX	Knife Dish Spacer	2
79	TH237-912106006FH8.8	Hex Socket Set Screw with Cone Point M6x6	4
80	TH237-910508020FH88Q	Hex Socket Head Cap Screw M8x20	4

Item No	Handy Part No	Description	Qty
1	TH237-CPRO7001000	Base Weldment	1
2	TH237-CPRO7002100	Roller Weldment	1
3	TH237-CPRO7003000	Shredder Hopper	1
4	TH237-CPRO7000002DY	Striker Plate	1
5	TH237-CPRO7004000	Inlet Hopper Assembly	1
6	TH237-CPRO7010000	Wheel	2
7		B&S Engine	1
8	TH237-CPRO7005000	Handlebar	1
9	TH237-CPRO7006000	Output Hopper Assembly	1
10	TH237-CPRO7000005	Baffle	1
11	TH237-CPRO7000007	Belt Pulley	1
12	TH237-CPRO7000008	Engine Belt Pulley	1
13	TH237-CPRO7000009DX	Engine Bushing	1
14	TH237-CPRO7007000	Belt Pulley Cover Weldment	1
15	TH237-CPRO7012000	Belt Pulley Base Plate Weldment	1
16	TH237-910106012DX88	Hex Bolt M6x12	8
17	TH237-920606000DX	Nylon Lock Nut M6	9
18	TH237-911406012DX	Step Bolt M6x12	2
19	TH237-930106000DX	Flat Washer Ø6	8
20	TH237-CPRO7008000	Roller Cover Plate Weldment	1
21	TH237-Z33000003FH	Spring B	2
22	TH237-Z33000008DX	Pawl B	2
23	TH237-Z330000017DX	Key Ring	2
24	TH237-CPRO7000001DX	Wheel Axle	1
25	TH237-M01000009DX	Flat Washer (Ø8.5 * Ø37*3)	3
26	TH237-910108025DX88	Hex Bolt M8x25	3
27	TH237-930608000DX	Lock Washer Ø8	40
28	TH237-CPRI5012000	Hand Wheel	1
29	TH237-CPRO7009000	Engine Transition Plate	1
30	TH237-940204022FH	Elastic Cylindrical Pin	2
31	TH237-960826129	Thrust Ball Bearing	1
32	TH237-920110000DX	Hex Nut M10	4
33	TH237-910110060DX88Q	Hex Bolt M10x60	4
34	TH237-910110055DX88Q	Hex Bolt M10x55	2
35	TH237-CPRO7000003	Blade Protection Piece	2
36	TH237-CPRO7000004	End Cap	1
37	TH237-CPRO7000012	Shield Mounting Plate Assembly	1
38	TH237-CPRO7000011	Bumper Block	1
39	TH237-SPA1457	Beit	2
40	TH237-CPRO7000013	Inlet Hopper Rubber	1

EC DECLARATION OF CONFORMITY



We Handy Distribution Ltd - SN3 5HY (Importer) declare that the product:

Designation: Chipper Shredder 65

Model(s): THPDS65

Product Number: 1938153001

Type/Serial No: As per rating label on machine

Complies with the following directives:

2006/42/EC – Machinery Directive

2000/14/EC amended by 2005/88/EC - Noise Emission of Outdoor Equipment Directive

The conformity assessment procedure followed was in accordance with

EN ISO 12100:2010, EN 13683:2003+A2:2011+AC:2013, EN 349:1993+A1:2008,

EN ISO 14120:2015, EN ISO 13857:2008

EN ISO 3744:2010

Guaranteed Sound Power Level

104 dBA

Notified Bodies:

Ente Certificazione Macchine Srl

Address(es):

Via Ca' Bella, 243 – Loc. Castello di Serravalle – 40053 Valsamoggia (BO) - ITALY

Authorised signatory & technical file holder

Date:

28/07/2017

Signature:

A handwritten signature in black ink, appearing to read 'S Belcher', written over a horizontal line.

Name: Mr Simon Belcher

Position: Managing Director

Company: Handy Distribution Ltd

Address: Murdock Rd, Dorcan, Swindon, Wiltshire, SN3 5HY.

GJ HANDY & CO LTD USER WARRANTY POLICY

Users Statement of Warranty

Each new machine is warranted against defective material or assembly of material under normal usage. The warranty applies to the original purchaser and covers faulty parts and the labour involved in replacing and repairing those parts, which are of original manufacture.

Period of Warranty

All Webb & Webb Pro machines plus Sanli engines.

- a) 2 years from the original date of sale to the first domestic user.
- b) 90 days from the original date of sale to the professional/commercial user.
- c) 90 days from the original date of sale when used for hire.
- d) A reduced warranty period of 90 days applies to those items which are subject to normal wear and tear (e.g. but not limited to wheels, tyres, cutter bars, cylinders, blades, belts, cables, grass bags, spark plugs).
- e) Engines as per the manufacturer's warranty statement which will be supplied with the machine.
- f) 90 days from the original date of purchase for Replacement Spare Parts (unless normal wear & tear component, which are covered for 30 days).
- g) All machines' must be serviced within the first 12 months from the original date of purchase to comply with the warranty, failure to do so will invalidate the 2nd year of the warranty.

All Handy, Mowerland and Q-Garden products.

- a) 1 year from the original date of sale to the first domestic user.
- b) 90 days from the original date of sale to the professional/commercial user.
- c) 90 days from the original date of sale when used for hire.
- d) A reduced warranty period of 90 days applies to those items which are subject to normal wear and tear (e.g. but not limited to wheels, tyres, cutter bars, cylinders, bottom blades, belts, cables, collection bags, spark plugs).
- e) Engines as per the manufacturer's warranty statement which will be supplied with the machine.
- f) 90 days from the original date of purchase for Replacement Spare Parts (unless normal wear & tear component, which are covered for 30 days).

All warranty repairs must be undertaken by an authorised service dealer. These dealers have been accredited by GJ Handy & Co Ltd and agree to only use genuine parts and follow our repair procedures.

GJ HANDY & CO LTD USER WARRANTY POLICY

Not covered by this warranty

- a) The warranty policy does not cover any depreciation or damages caused by ordinary wear, rusting or corrosion, lack of correct maintenance or operation, misuse, abuse, lack of transportation or accident.
- b) The warranty policy does not cover any costs necessary for the standard periodic maintenance services instructed by the operator's manual, or service parts replacement which would include oil, filters, tyres, belts, brake linings, fuses, blades, seals and other service parts unless it can be proven that the item has evidence of faulty manufacture.
- c) The warranty policy will not cover failure or damage caused as a result of parts or accessories being modified without the written approval of GJ Handy & Co Ltd.
- d) The warranty policy will not cover the unit if non-genuine parts have been fitted and as a result damage has occurred to the unit.
- e) The warranty policy is non-transferable and is only applicable to the original purchaser.

Disclaimer

- a) This warranty is only a remedy for defect of products. GJ Handy & Co Ltd will never warranty in terms of the merchantability or the fitness for a particular purpose.
- b) No person is authorised to make any warranties, representations or promises, expressed or implied, on behalf of GJ Handy & Co Ltd, or to modify the terms conditions or limitation of this warranty policy in any way.
- c) Neither GJ Handy & Co Ltd nor any company affiliated with GJ Handy & Co Ltd shall be liable in any event or manner whatsoever for incidental or consequential damages or injuries, including, but not limited to, loss of crops, loss of profit, out of pocket expenses or profits, rental of substitute equipment or other commercial losses.

General

- a) Most warrantable failures show up within the first few weeks of use. These failures are usually straightforward and warranty assessment is relatively easy.
- b) Failures relating to cutter decks and belts need careful investigation, as the cause may not always be straightforward. Look for damage to blades and pulleys especially when the cutter belt or blade boss have snapped or cracked as this could be due to impact damage.
- c) Customers should always refer to the operator/instruction manual when any disputed problem arises, you will find most areas covered within the manual.

For spares or support of your handy product,
please contact us:

Tel: 01793 333212

Email: customerservice@handydistribution.co.uk

(Mon – Fri 8.00am to 5.30pm excl. Bank Holidays)

To see our range of garden machinery & equipment visit:

www.thehandy.co.uk

Making gardening easier & affordable since 1938

Distributed by Handy Distribution, Murdock Road, Dorcan, Swindon, SN3 5HY